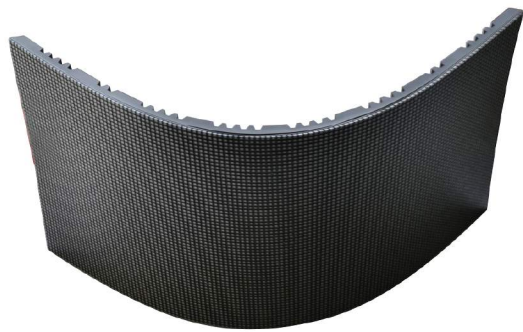


FLEXIBLE LED DISPLAY

ExplorerLED®



Easy Magnetic Connection



Ultra-Thin < 12mm



Ultra-Light < 85kg/Module



High Quality: 10000 times Bending Tests



Flexible In Shape



Seamless Curve



No Noise

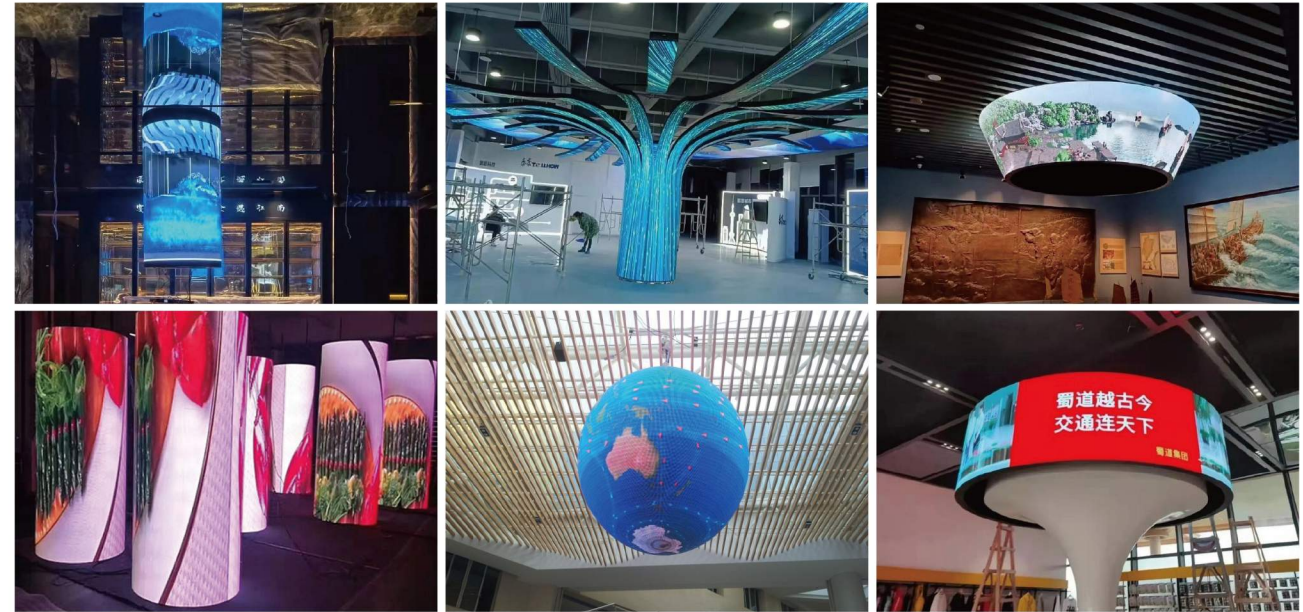


Front & Rear Maintenance

FEATURES

- Variable shapes meet for creative LED display design.
- Flexible for multiple installation methods.
- Easy to form any creative shapes, Convex & Concave Flexible Solution, S shape LED display and circle LED display.
- All components can be serviced from both rear & front.

SPECIFICATIONS



Technical Specifications	P1.25	P1.579	P1.667	P1.875	P2	P2.5	P3	P4
Pixel Pitch	1.25mm	1.579mm	1.667mm	1.875mm	2mm	2.5mm	3mm	4mm
Pixel Configuration	SMD1010	SMD1010	SMD1010	SMD1515	SMD1515	SMD2020	SMD2020	SMD2020
Module Size	240*120mm	240*120mm	240*120mm	240*120mm	240*120mm	240*120mm	240*120mm	240*120mm
Module Resolution	192*96dots	152*76dots	144*72dots	128*64dots	120*60dots	96*48dots	80*40dots	60*30dots
Pixel Resolution	640,000dots/m ²	401,111dots/m ²	360,000dots/m ²	284,444dots/m ²	250,000dots/m ²	160,000dots/m ²	111,111dots/m ²	62,500dots/m ²
Cabinet Size	Customized	Customized	Customized	Customized	Customized	Customized	Customized	Customized
Cabinet Weight	28kg	28kg	28kg	28kg	28kg	28kg	28kg	28kg
Average Comfortable Viewing Distance	1m	1.5m	1.6m	3.23m	3.44m	4.3m	5.16m	6.88m
Brightness	600-800cd/m ²	600-800cd/m ²	600-800cd/m ²	600-800cd/m ²	600-800cd/m ²	600-800cd/m ²	600-800cd/m ²	600-800cd/m ²
View Angle	160°(W) 140°(H)	160°(W) 140°(H)	160°(W) 140°(H)	160°(W) 140°(H)	160°(W) 140°(H)	160°(W) 140°(H)	160°(W) 140°(H)	160°(W) 140°(H)
Refresh Rate	>3,840HZ	>3,840HZ	>3,840HZ	>3,840HZ	>3,840HZ	>3,840HZ	>3,840HZ	>1,920HZ
Input Voltage	AC90v-264V±10%	AC90v-264V±10%	AC90v-264V±10%	AC90v-264V±10%	AC90v-264V±10%	AC90v-264V±10%	AC90v-264V±10%	AC90v-264V±10%
Max.power Consumption	≤552W/m ²	≤380W/m ²	≤380W/m ²	≤431W/m ²	≤431W/m ²	≤380W/m ²	≤396W/m ²	≤431W/m ²
Avg. Power Consumption	157W/m ²	108W/m ²	108W/m ²	123W/m ²	123W/m ²	113W/m ²	113W/m ²	123W/m ²
Working Temperature	-20°C~+50°C	-20°C~+50°C	-20°C~+50°C	-20°C~+50°C	-20°C~+50°C	-20°C~+50°C	-20°C~+50°C	-20°C~+50°C
Storage Temperature	-30°C~+60°C	-30°C~+60°C	-30°C~+60°C	-30°C~+60°C	-30°C~+60°C	-30°C~+60°C	-30°C~+60°C	-30°C~+60°C
Working Humidity	10%-95%	10%-95%	10%-95%	10%-95%	10%-95%	10%-95%	10%-95%	10%-95%
Lifespan	100,000hours	100,000hours	100,000hours	100,000hours	100,000hours	100,000hours	100,000hours	100,000hours
Maintenance Mode	Front/Rear	Front/Rear	Front/Rear	Front/Rear	Front/Rear	Front/Rear	Front/Rear	Front/Rear

ExplorerLED®

Shenzhen Explorerled Optoelectronic CO., LTD

+86 13823155160

sales@explorerled.com

www.explorerled.com

Unit C, No.37, Baoshi West Road, Longteng community, Shiyan street, Baoan district, Shenzhen, China.



The Largest Manufacturer Of Ultra-High Definition (UHD) SMD LED Video Displays

